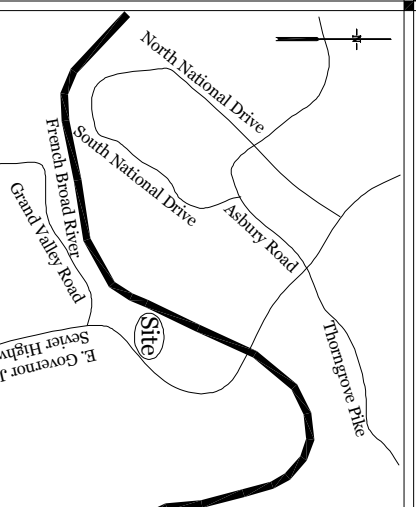
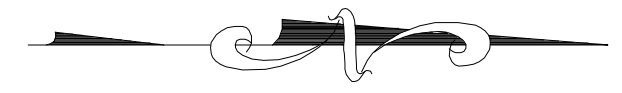


Vicinity Map N.T.S.

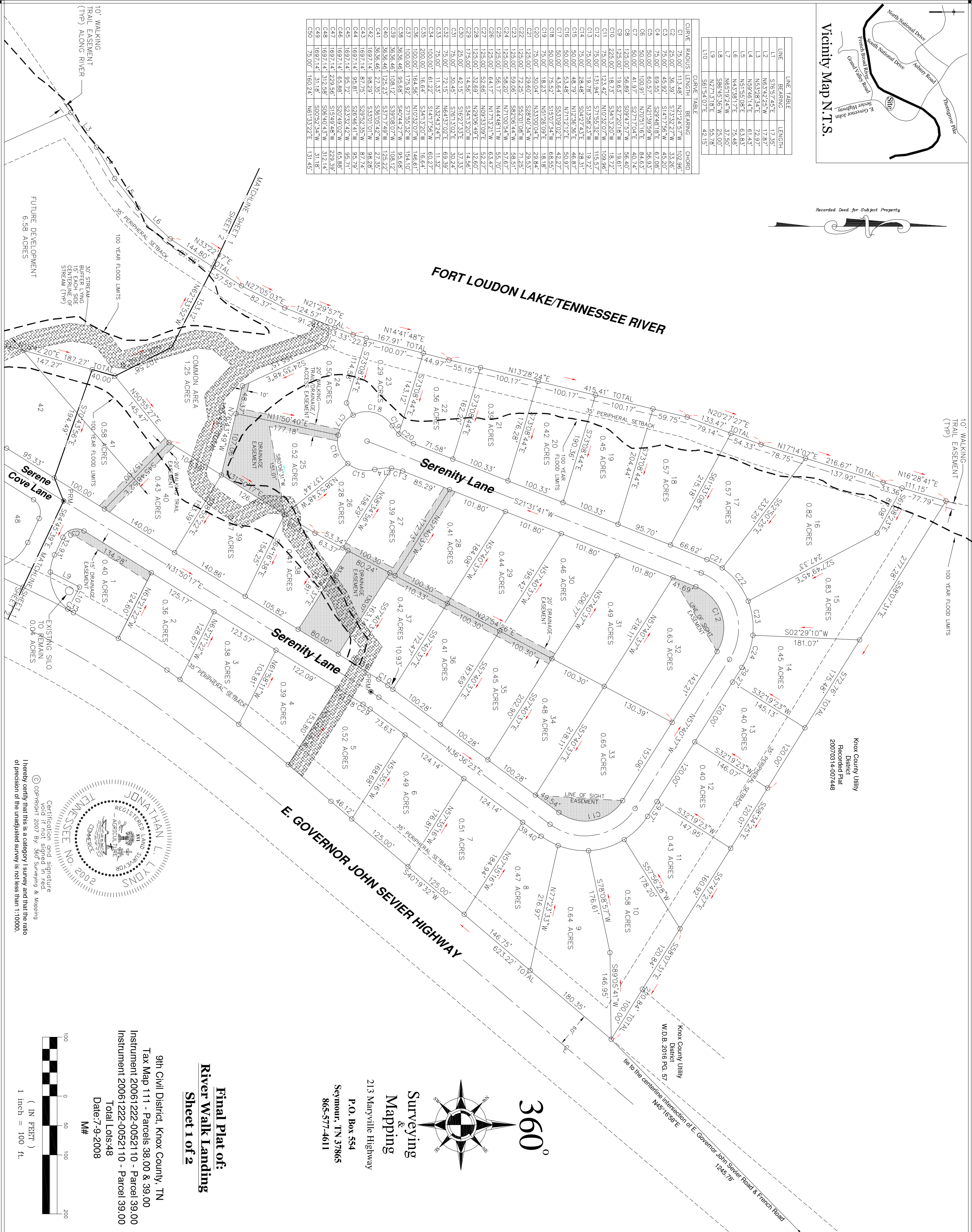


Recorded Deed for Subject Property



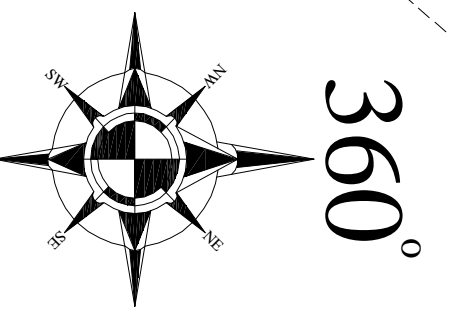
LINE	BEARING	LENGTH
L1	S76°57'45"E	17.35'
L2	N63°42'25"W	17.87'
L3	N53°28'54"E	72.97'
L4	N69°46'14"E	61.43'
L5	N51°55'08"E	63.83'
L6	N43°38'17"E	75.48'
L7	N65°19'24"W	37.50'
L8	S86°45'36"W	25.00'
L9	N27°13'18"E	55.78'
L10	S61°54'07"E	42.15'

CURVE	RADIUS	LENGTH	BEARING	CHORD
C1	75.00'	113.48'	N21°24'57"W	102.96'
C2	25.00'	36.39'	S73°32'27"W	33.26'
C3	75.00'	45.92'	S14°17'56"W	45.20'
C4	75.00'	69.55'	S29°48'18"E	67.08'
C5	50.00'	60.57'	N21°39'59"W	56.93'
C6	50.00'	100.91'	N70°51'16"E	84.63'
C7	20.00'	41.97'	S27°17'04"E	40.74'
C8	125.00'	56.89'	S09°47'57"W	56.40'
C9	125.00'	19.63'	S27°20'18"W	19.61'
C10	225.00'	18.73'	S34°13'20"W	18.72'
C11	75.00'	123.42'	N10°32'07"W	109.96'
C12	75.00'	151.94'	S71°58'52"W	115.57'
C13	75.00'	19.28'	S13°59'43"E	18.74'
C14	75.00'	28.79'	N17°58'45"E	28.87'
C15	50.00'	53.48'	N17°17'12"E	50.97'
C16	50.00'	43.64'	S53°09'02"E	42.27'
C17	50.00'	75.52'	S19°07'34"W	68.55'
C18	75.00'	18.23'	N51°28'03"E	18.18'
C19	75.00'	30.04'	N33°00'04"E	29.84'
C20	125.00'	29.60'	S28°40'34"W	29.53'
C21	125.00'	72.25'	S52°01'08"W	71.25'
C22	125.00'	59.08'	S62°06'44"W	58.51'
C23	125.00'	58.20'	N17°00'54"W	57.67'
C24	125.00'	56.17'	N44°48'11"W	55.70'
C25	125.00'	64.17'	N17°31'21"W	63.47'
C26	125.00'	52.66'	N09°33'09"E	52.27'
C27	125.00'	14.56'	S34°19'20"W	14.56'
C28	175.00'	42.15'	S16°27'33"E	37.33'
C29	75.00'	30.45'	S76°13'02"E	30.24'
C30	75.00'	72.15'	N64°31'02"E	69.39'
C31	75.00'	11.33'	N32°43'24"E	11.32'
C32	200.00'	61.22'	S14°15'56"W	60.82'
C33	100.00'	164.65'	N10°33'07"W	146.61'
C34	100.00'	175.92'	S71°55'32"W	154.10'
C35	363.66'	96.68'	S40°44'27"W	95.68'
C36	363.66'	108.12'	S39°08'07"W	108.12'
C37	363.66'	125.23'	S37°17'49"W	125.22'
C38	363.66'	272.35'	S36°05'42"W	272.35'
C39	363.66'	533.01'	S33°01'01"W	533.01'
C40	363.66'	87.75'	S29°52'35"W	87.74'
C41	363.66'	95.81'	S28°46'41"W	95.79'
C42	1697.14'	95.72'	S23°42'42"W	95.71'
C43	1697.14'	65.88'	S20°49'02"W	65.88'
C44	1697.14'	229.56'	S15°49'48"W	229.39'
C45	1697.14'	312.58'	S08°40'43"W	312.14'
C46	1697.14'	31.18'	S00°52'34"W	31.18'
C47	75.00'	160.24'	N61°33'22"E	131.45'



Knox County Utility
District
Recorded Plat
20070314-00748

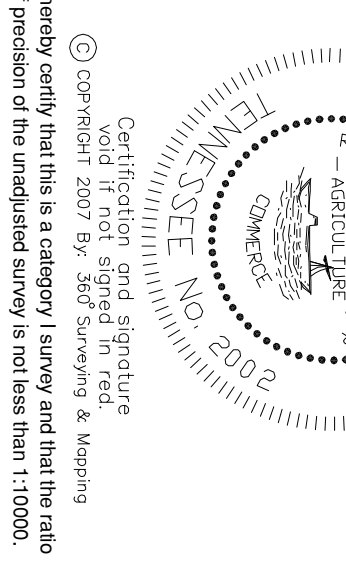
Knox County Utility
District
W.D.B. 2016 PG. 57



360°
Surveying & Mapping
213 Maryville Highway
P.O. Box 554
Seymour, TN 37865
865-577-4611

Final Plat of:
River Walk Landings
Sheet 1 of 2

9th Civil District, Knox County, TN
Tax Map 111 - Parcels 38.00 & 39.00
Instrument 20061222-0052110 - Parcel 39.00
Instrument 20061222-0052110 - Parcel 38.00
Total Lots: 48
Date: 7-9-2008
M#



Certification and signature of Jonathan L. Lyons, Registered Land Surveyor, Tennessee, No. 202. I hereby certify that this is a category 1 survey and that the ratio of precision of the unadjusted survey is not less than 1:10000.
© Copyright 2007 by 56° Surveying & Mapping

